

## Transmit data from device to Diasend transmitter.

### Connecting device to transmitter

**Device with USB cable** Connect the device to the transmitter by using the device's specific USB cable. Please note that glucose meters have different requirements for activating transmission. See next page of this guide.

**Device with IR (InfraRed)** The IR sensor of the device must be directed toward the center of the transmitter's front panel. The distance between the transmitter's front panel and the device should not exceed 10 cm (4 inches). For information on how to activate a specific device in the communication position, please see next page of this guide.

**Device with Bluetooth** (Abbott Freestyle Navigator)  
Please see next page of this guide.

### Transferring data

1. Connect the device according to the information on the left. The **blue SEND** indicator should begin to flash rapidly.
2. Wait until the **blue SEND** indicator stops flashing rapidly and the **green OK** indicator is lit. *If the **red ERROR** indicator is lit, try again. If several error transmissions occur please contact Diasend support.*
3. After the transmission is complete the downloaded information can be found at [www.diasend.com](http://www.diasend.com).

#### Compatible devices

See page next page in this quick guide or visit [www.diasend.com](http://www.diasend.com) for a complete list of compatible devices.

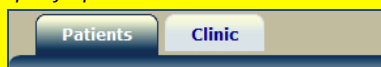
## How to review data at [www.diasend.com](http://www.diasend.com)

### Login

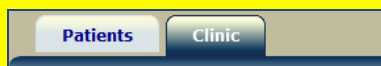
Go to [www.diasend.com](http://www.diasend.com): Choose **USA**. You will be transferred to the login site. If you have questions about your login please contact Diasend support.

### Only viewing data vs saving data

There are 2 ways to handle the downloaded data: *You can either view the data without saving it to a specific patient name, or you can save the downloaded data from devices to a specific patient name. See below:*



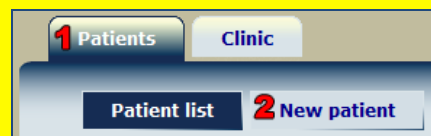
All registered patient names are found under the **Patients** tab. The clinic registers patients. Note: Remember to save patient.



Under the **Clinic** tab current day transmissions are found. To view data from a specific device(s), check the box by clicking on it then click on the link "Show selected devices". Note: Data not saved to a patient profile will be deleted after midnight.

### Create a new patient

Click on the tab "Patients" then click on the tab "New patient"



#### Mandatory fields:

- First name, Last name
- User name and login for patients (patients login)
- Serial number of device(s) **Note: It is important to scroll down the page to click on "Save Patient"!**

### Edit existing patient

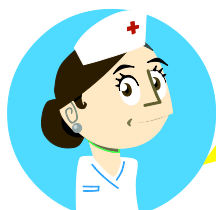
Choose a patient from the patient list and click on "Patient profile"

### Review data

After selecting a patient from the patient list or a device from the clinic list you will see the data divided into the below four tabs:



- Glucose:** Graphs and tables for glucose readings.
- Insulin:** Graphs and tables for insulin delivery history, alarms and settings downloaded from insulin pump.
- Comparison:** Graphs and tables with glucose readings and insulin deliveries combined.
- Compilation:** A summary of the data.



For more in depth tutorials, please refer to the **Online Tutorials** at [www.diasend.com](http://www.diasend.com)

## Instructions for specific devices

### Glucose meters

**Accu-Chek Compact Plus:** Activate IR transmission by pushing and holding the buttons **S** and **M** below display until two arrows appear. Place the glucose meter's top end directed towards the center of the transmitter's front panel.

**Accu-Chek Aviva, Aviva Nano, Mobile:** Activate IR transmission by pushing and holding the two arrow buttons until two arrows appear. Place the glucose meter's top end directed towards the center of the transmitter's front panel.

**Accu-Chek Aviva Combo:** In the main menu, go to "My data" and select "Data transfer". Place the meter with its upper part, directed toward the center of the transmitter's front panel.

**Accu-Chek Mobile (USB):** Connect the meter with a standard micro-USB cable.

**Bayer Breeze2:** Connect the meter to the transmitter with specific transfer cable. Push the meter's **ON** button. (*Transmission takes about 3 minutes*).

**Bayer Contour:** Connect the meter to the transmitter with specific transfer cable. Push the meter's **M** button.

**Bayer Contour USB:** Connect the device directly into the transmitter or with the specific transfer cable.

**Abbott Freestyle (Lite, Mini, Flash, Freedom, Freedom Lite):** Connect the meter to the transmitter with specific transfer cable. NOTE: After completed transmission, disconnect the meter and wait at least 15 seconds before connecting another Freestyle meter.

**Abbott Precision Xtra** Connect the meter with specific transfer cable.

**Abbott Freestyle Navigator:** On the meter, go to "Menu -> System -> Data transmission". Select and confirm to activate. *Please note your Diasend system needs to be equipped with a Bluetooth adapter.*

**LifeScan OneTouch (Ultra, Ultra2, UltraMini, Select):** Connect the meter with specific transfer cable.

**LifeScan OneTouch UltraSmart:** Connect the meter with specific transfer cable. Push the left black button.

**LifeScan OneTouch Ping and Verio IQ :** Connect the meter with a standard mini-USB cable.

**Acon Laboratories On Call Resolve, On Call Advanced:** Connect the meter with specific transfer cable. Press the **M** and **S** buttons to enter the data transfer mode. "PC" will appear on the display when the meter enters the data transfer mode.

**Acon Laboratories On Call Plus:** Connect the meter with specific transfer cable. Press and hold the **S** button on the meter to enter the data transfer mode. "PC" will appear on the display when the meter enters the data transfer mode.

**Arkray GlucoCard X-meter, X-mini plus:** Connect the meter with specific transfer cable.

**Nipro TRUEResult:** Place the meter into the appropriate "cross docking" and connect specific USB cable to the transmitter.

**AgaMatrix- WaveSense (KeyNote, Jazz):** Connect the meter with specific transfer cable.

**i-SENS CareSens N:** Connect the meter to the transmitter with specific transfer cable. Press the meter's **S** button.

### Insulin pumps

**Animas: OneTouch® Ping®, IR1200/1250/2020**

*Please note: The Ping pump also transmits glucose readings that are synchronized with the Ping meter.*

1. Suspend the pump. (MAIN MENU, scroll to "Suspd/Resum" and press OK; "Suspend" is highlighted).

2. Press OK.

3. Place the pump with its back towards the middle of the Transmitter's front panel. (*Transmission takes about 3 minutes*)

4. When the transmission is finished: Resume pump (MAIN MENU, scroll to "Suspd/Resum" and press OK; "Resume" is highlighted. Press OK.)

**Insulet: OmniPod 200**

1. Connect the device ("PDM") to the transmitter using a standard mini-USB cable.

2. The PDM will now prepare its data and start transmission.

3. Wait until the SEND indicator has finished blinking and the OK indicator is lit.

4. When the transmission is finished, disconnect the PDM from the data cable.

**Accu-Chek Spirit**

The Smart Pix needs to be connected to the transmitter. For more instructions contact Diasend support.

**Nipro: Amigo**

1. Main menu

2. Settings

3. Advanced

4. Choose "Link to PC"

## Indicators on the transmitter

**OK** indicator signals a successful transmission.

**OK** flashes at startup when the transmitter connects to the network and does an update check.

**SEND – Rapid flashing:** Information is being transferred.

**SEND – Slow flashing:** The transmitter is ready to be connected to a device to transmit

**ERROR** indicator signals a transmission failure, most likely due to temporary issues related to the wireless GSM network. Should this occur please try to download the device again.

**Location of IR receiver.**  
Point IR device here.

